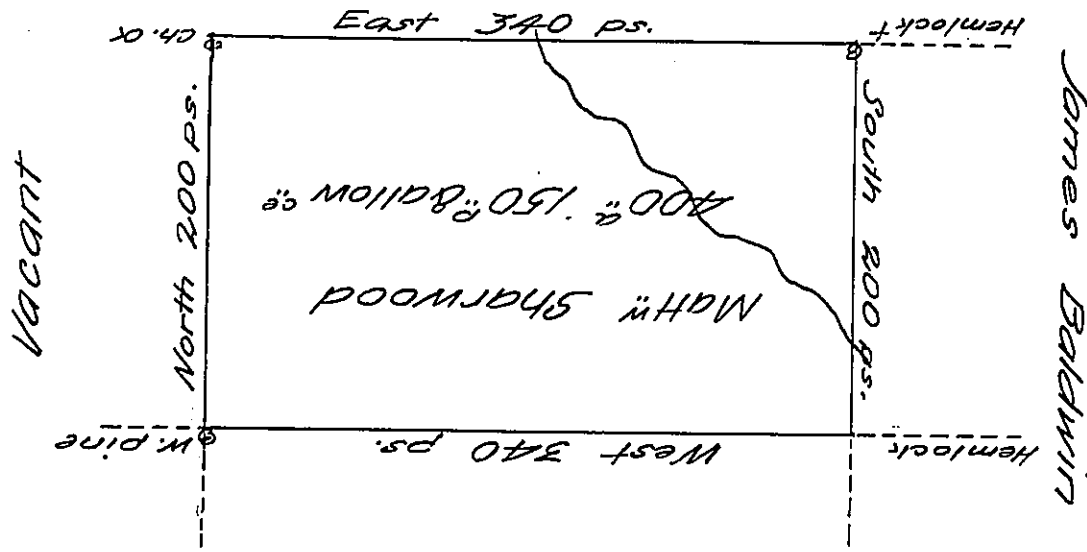


Vacant Land



JOHN SHARWOOD

A Draught of a Tract of land situate on the Waters of Little Sugar Creek in the County of Luzerne, Containing Four hundred Acres: 150 perches & Allow^{ce} of Six P. C^s for Roads &c. Surveyed July 21st 1793 on a Warrant to Matthew Sharwood dated the 13th Aug^r 1792

Jo J. Wallace D.S.

To Dan^l Brodhead Esq
Surv. General

IN TESTIMONY that the above is a copy of the original remaining on file in the Department of Internal Affairs of Pennsylvania, made conformably to an Act of Assembly approved the 16th day of February, 1833, I have hereunto set my Hand and caused the Seal of said Department to be affixed at Harrisburg, this thirtieth day of November 1906

Geac N Brown
Secretary of Internal Affairs